

Security PCB

12VDC/24VDC/24VAC



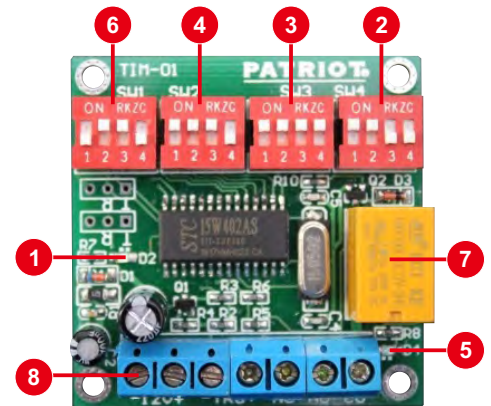
TIM01 - Digital timer board

Features

- Designed to provide 8 field programmable functions controlling a Single Pole Double Throw relay with timing intervals ranging between 1 second and 99 days

Layout

1. Power LED
2. SW4 - "Ones" DIP switches
3. SW3 - "Tens" DIP switches
4. SW2 - "Timing" DIP switches
5. Relay operation LED
6. SW1 - "Mode" DIP switches
7. Output relay
8. Terminal block



Specifications

Model: Tim 01
 Input voltage: 12VDC - 13.8VDC
 Quiescent current: 15mA @ 12VDC
 Operation current: 35mA @ 12VDC
 Relay rating: 3A @ 250V AC / 30V DC
 Size: 50 x 50 mm

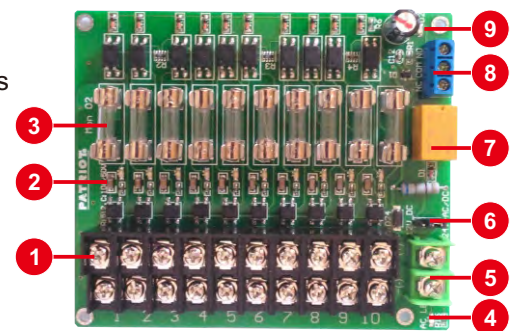
MON02 - Monitored power distribution board

Features

- User friendly solution for low voltage power distribution applications
- State-of-the-art SMD technology
- 10 individually fused and monitored outputs
- Operating voltage 12-24V AC/DC

Layout

1. Output terminal blocks
2. Individual circuit LED(Green=OK)
3. Individual circuit fuses (1A each)
4. 24VAC operation LED
5. Input terminal (Max total current =10A)
6. 12VDC/24VAC jumper link
7. Common fault relay
8. Common fault relay output (NC-Com-NO)
9. Common fault LED



Specifications

Model: Mon 02
 Input voltage: 12-24V AC/DC
 Output: 10 x fused and monitored outputs
 Total current: 10A Max
 Relay rating: 3A@250V AC / 30V DC
 Size: 110 x 93mm

Security PCB

12VDC/24VDC/24VAC



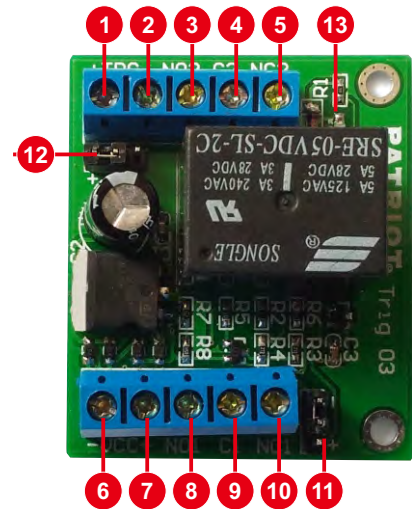
TRIG 03 - 12-24VDC Triggered relay

Features

- 12-24VDC triggered relay
- Option for positive or negative trigger
- 2 x sets of change over contacts

Layout

1. Trigger input (+ Positive)
2. Trigger input (- Negative)
3. Relay 2 - Common
4. Relay 2 - NC
5. Relay 2 - NO
6. 12V input (- Negative)
7. 12V input (+ Positive)
8. Relay 1 - common
9. Relay 1 - NC
10. Relay 1 - NO
11. Positive/Negative trigger link
12. Positive/Negative trigger link
13. Relay operating LED



Specifications

Model: Trig 03

Input voltage: 8-24V DC or AC

Contact rating: 3A @ 250V AC / 28V DC

Size: 50 x 43 mm

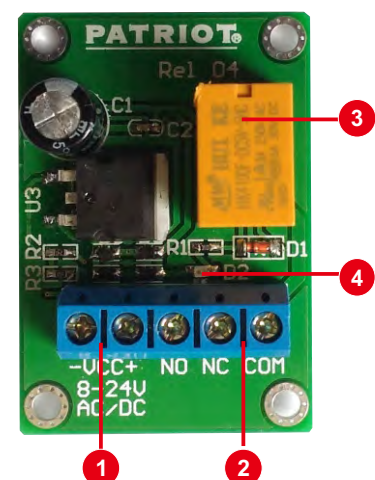
REL04 - Relay board

Features

- Wide input range 8-24V AC or DC
- Change over relay

Layout

1. Input terminal
2. Relay output (NC-Com-NO)
3. Relay
4. Relay operating LED



Specifications

Model: Rel 04

Input voltage: 8 - 24V AC/DC

Relay rating: 3A @ 250V AC / 30V DC

Size: 49 x 34 mm



Specifications can be changed without prior notice

Security PCB

12VDC/24VAC



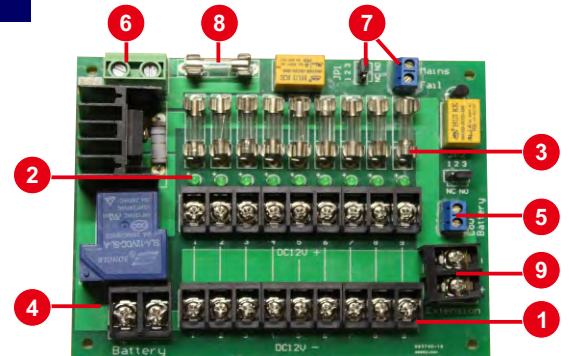
DC Power distribution board with battery charger

Features

- Reverse polarity battery protection
- Multiple fused outputs
- Low battery and supply fail contacts
- 1.2A linear battery charger

Layout

1. Output terminal blocks
2. Individual circuit LED
3. Individual circuit fuses (1A each)
4. Battery charger (1.2A)
5. Low battery terminal (NC/NO)
6. Input terminal (10V-16VDC)
7. Mains fail terminal (NC/NO)
8. Main fuse
9. High current terminal (Max current supplied)



Specifications

| Model | ZP-DC-9WAY-PCB | ZP-DC-16WAY-PCB |
|--------------------|---------------------|---------------------|
| Input voltage | 10V-16VDC | |
| Output | 9 x fused outputs | 16 x fused outputs |
| Total current | 9A Max. | 16A Max. |
| Relay rating | 1A 30VDC | |
| Battery charger | 1.2A | |
| Size(LxWxH)/weight | 133x106x31mm / 180g | 190x106x31mm / 220g |

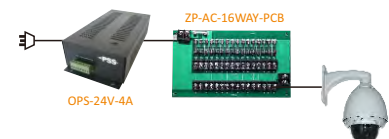
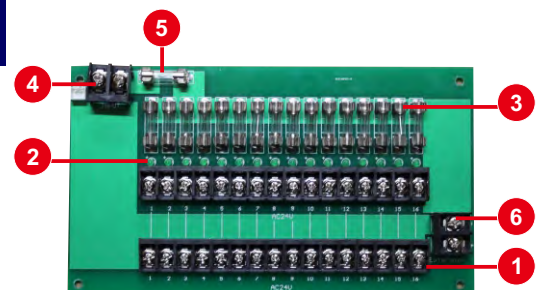
AC Power distribution board

Features

- Multiple output boards
- Total current fuse
- Multiple 1A outputs

Layout

1. Output terminal blocks
2. Individual circuit LED
3. Individual circuit fuses (1A each)
4. Input terminal (10V-30V DC/AC)
5. Main fuse
6. High current terminal (Max current supplied)



Specifications

| Model | ZP-AC-9WAY-PCB | ZP-AC-16WAY-PCB |
|--------------------|---------------------|---------------------|
| Input voltage | 10V-30VDC/AC | |
| Output | 9 x fused outputs | 16 x fused outputs |
| Total current | 9A Max. | 16A Max. |
| Relay rating | 1A 30VDC | |
| Size(LxWxH)/weight | 133x106x15mm / 180g | 190x106x15mm / 200g |