

# SBP-300KMW

Corner Mount

FC



CE

ERC

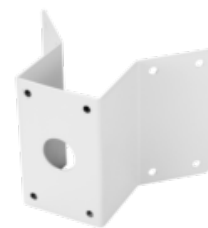


## Key Features

- Weight : 2200g
- Color : White
- Material : Steel
- Operation temp. : -50°C~60°C
- Operation hum. : 0~100%

# SBP-300KMW

Corner Mount



## Specifications

Environmental	
Operating Temperature / Humidity	-50°C ~ +60°C(-58°F ~ +140°F) / 0 ~ 100% RH
Storage Temperature / Humidity	-50°C ~ +60°C(-58°F ~ +140°F) / 0 ~ 100% RH
Mechanical	
Color	White
Material	Steel
RAL code	RAL9003
Product dimensions / weight	257(W)x183(D)x173(H)mm, 2200g
Mount Screw size	M10
Supported products	QND-6012R, QND-8010R ※ For further compatible models, please visit our website or use Toolbox