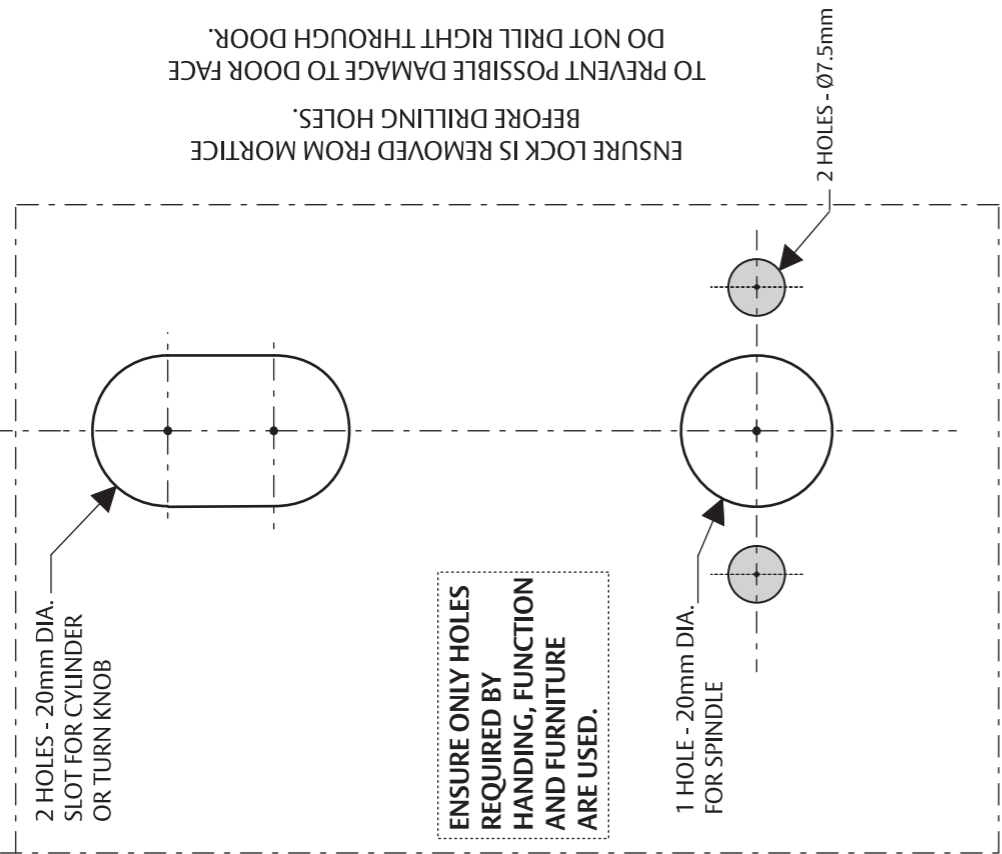


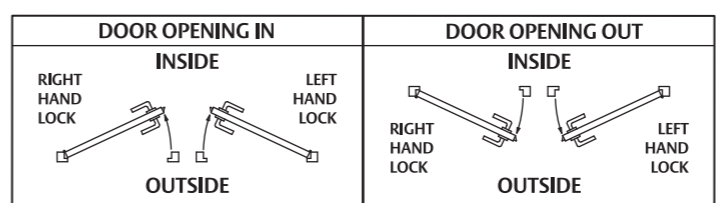
ENSURE LOCK IS REMOVED FROM MORTICE BEFORE DRILLING HOLES. TO PREVENT POSSIBLE DAMAGE TO DOOR FACE DO NOT DRILL RIGHT THROUGH DOOR.



CUT HERE

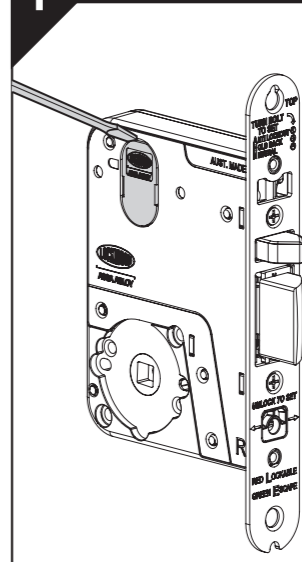
P/No. 3772H100 Iss. 06/19

HAND OF DOOR ACCORDING TO ENGLISH PRACTICE

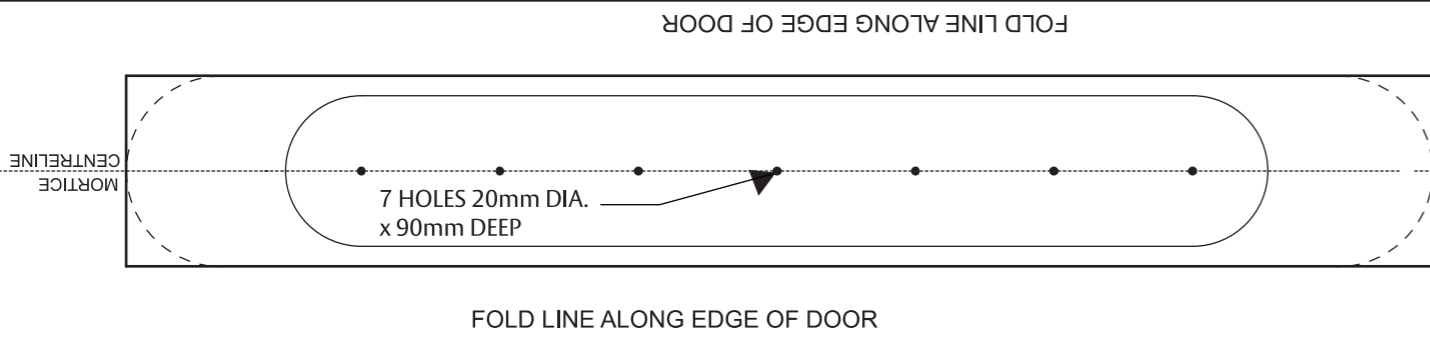


- Determine hand of lock required from chart above.
- Ensure only holes required by handing, function and furniture are cut into door.
- Disregard instructions referring to features not required.
- The lock is supplied in passage mode.

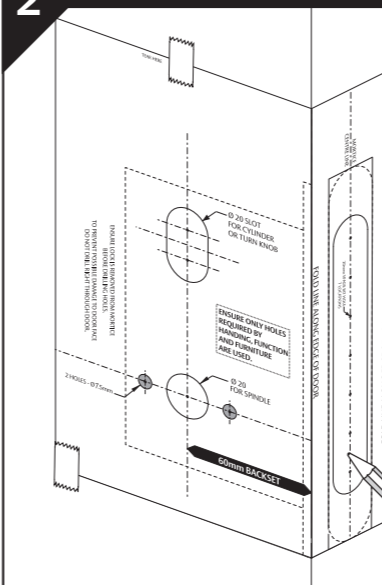
1 LOCK PREPARATION



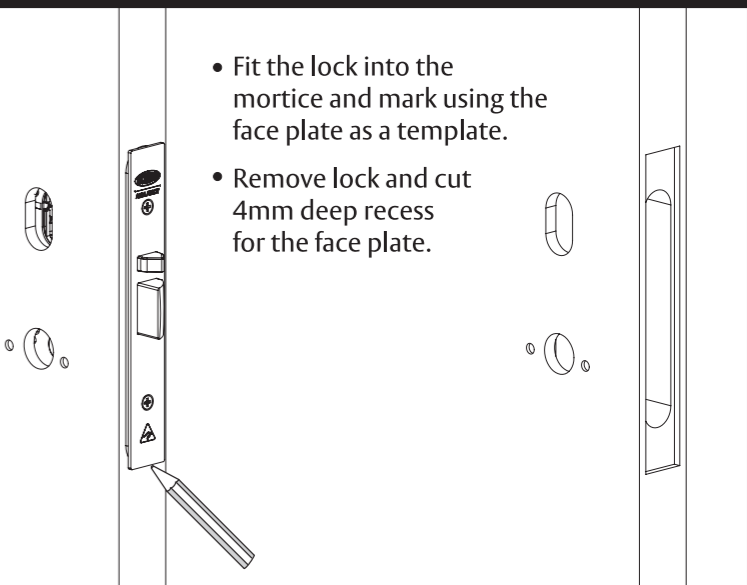
- Where cylinders or turn knobs are required, remove the cylinder plugs from the lock using a small screwdriver.



2 DOOR PREPARATION

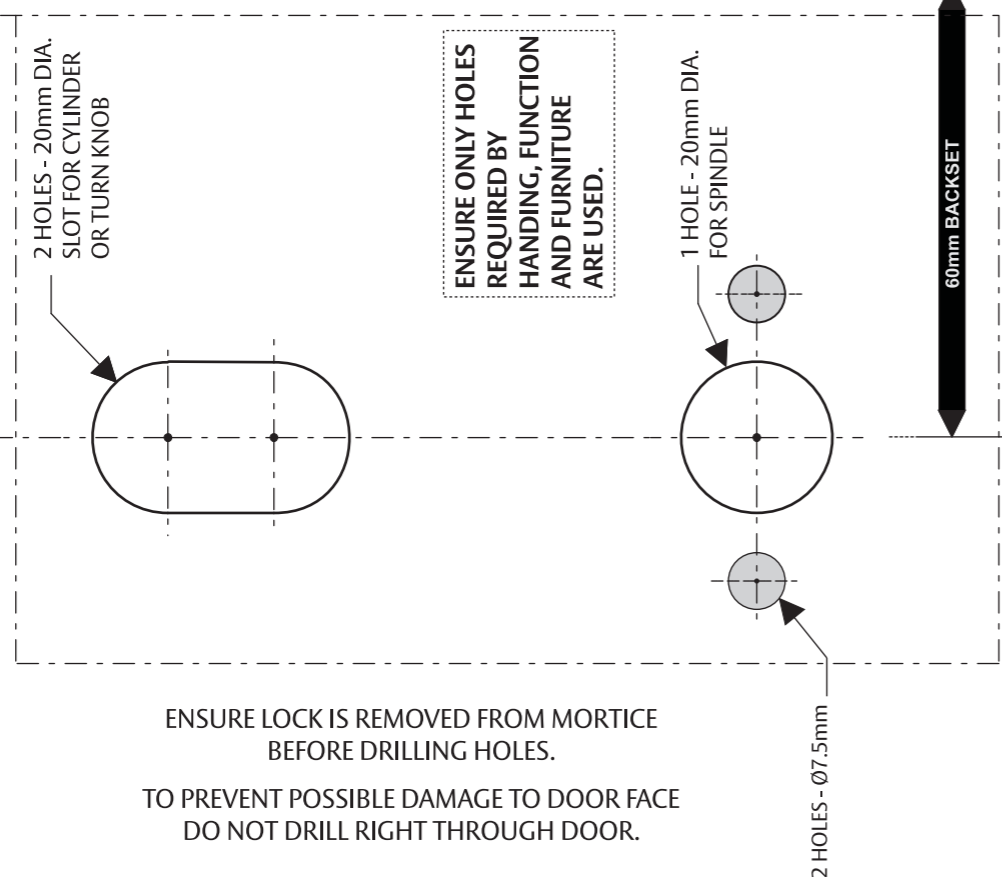


- Establish height that lock will be on the door.
- Cut mortice in door as per sizes shown on template.
- Determine what lever, cylinder or turn knob holes are required.
- Drill required furniture holes from both sides of door.



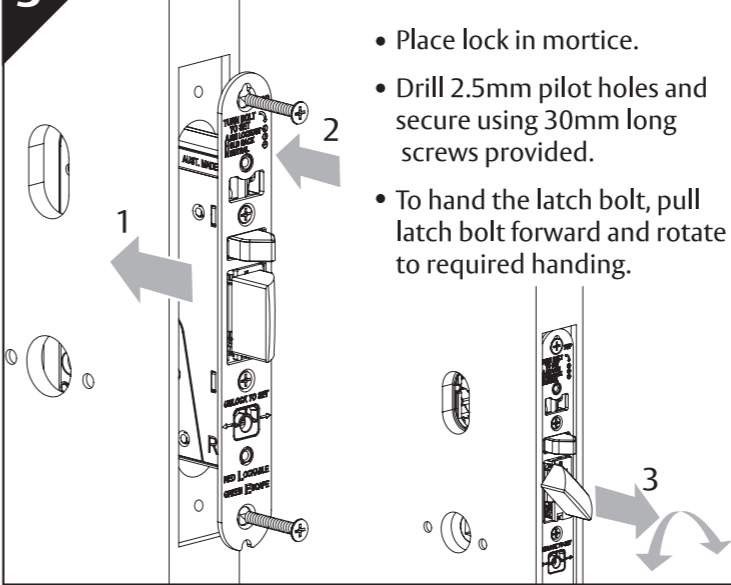
- Fit the lock into the mortice and mark using the face plate as a template.
- Remove lock and cut 4mm deep recess for the face plate.

ENSURE LOCK IS REMOVED FROM MORTICE BEFORE DRILLING HOLES. TO PREVENT POSSIBLE DAMAGE TO DOOR FACE DO NOT DRILL RIGHT THROUGH DOOR.



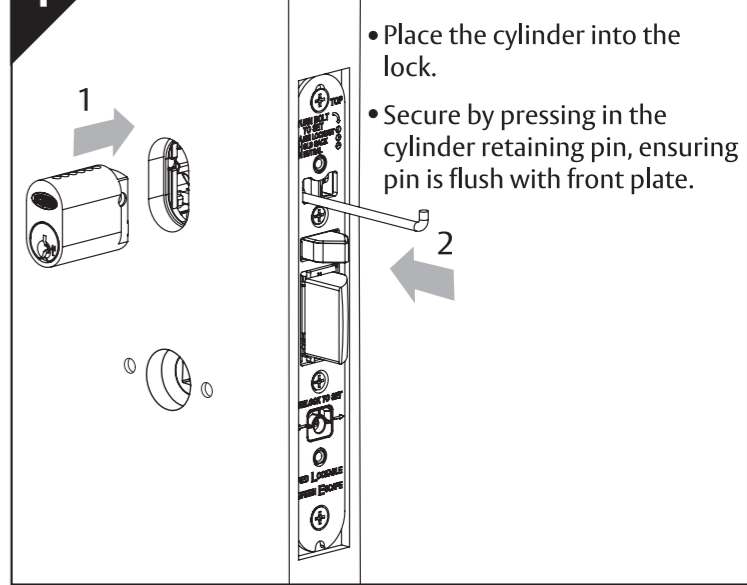
CUT HERE

3 LOCK INSTALLATION



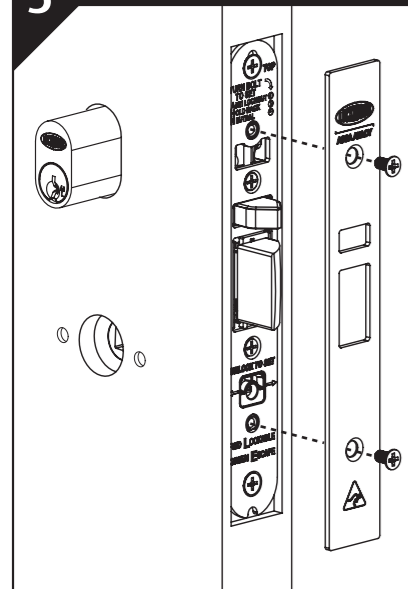
- Place lock in mortice.
- Drill 2.5mm pilot holes and secure using 30mm long screws provided.
- To hand the latch bolt, pull latch bolt forward and rotate to required handing.

4 CYLINDER INSTALLATION



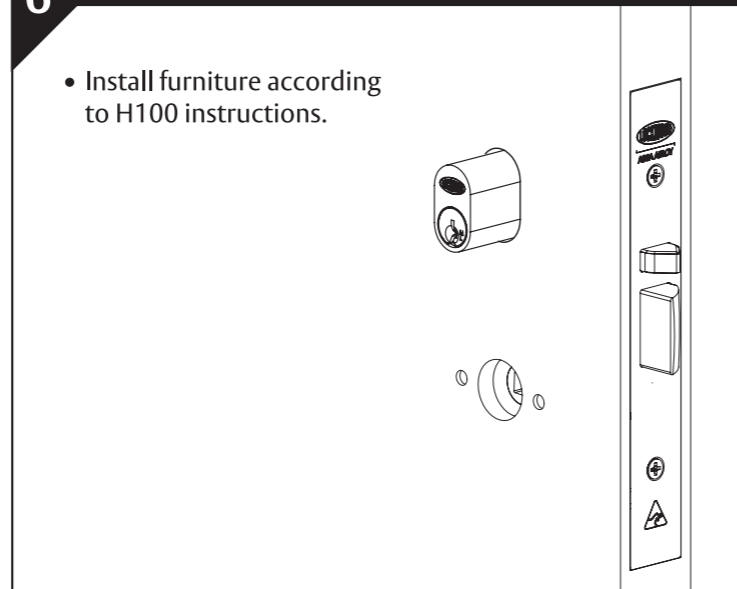
- Place the cylinder into the lock.
- Secure by pressing in the cylinder retaining pin, ensuring pin is flush with front plate.

**5 FACE PLATE INSTALLATION**



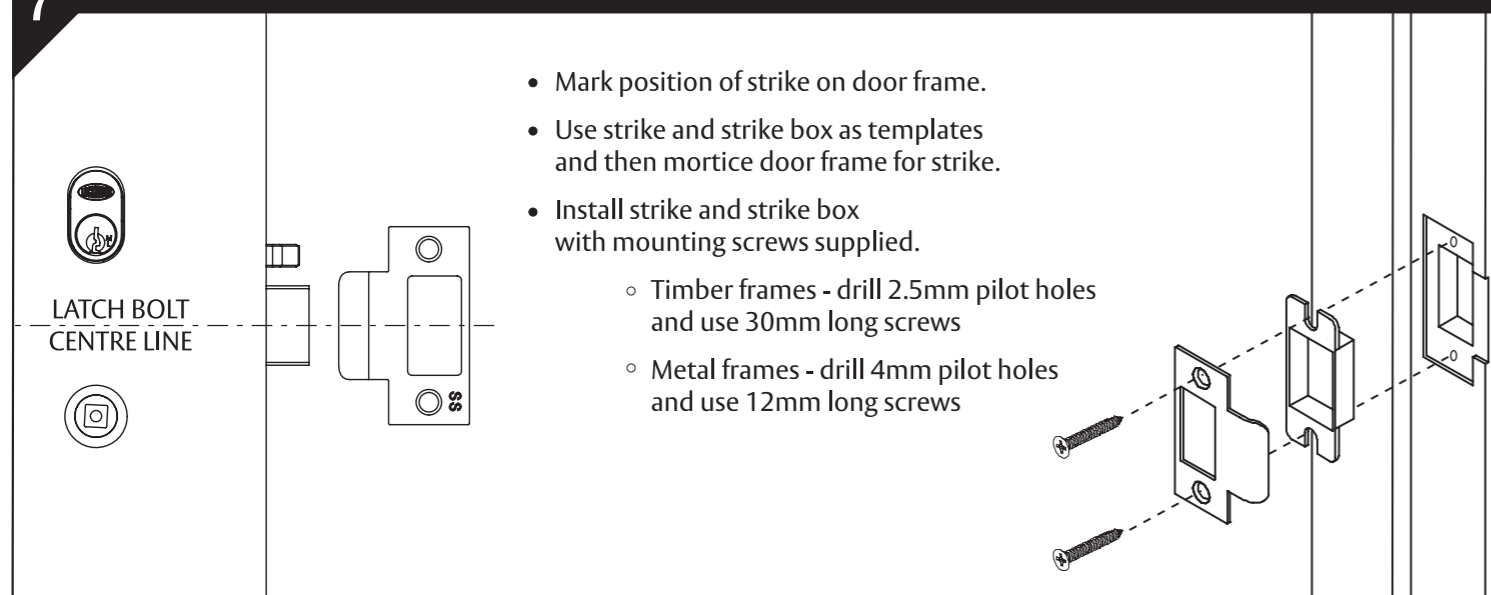
- Fit face plate onto lock using the supplied 8mm long screws.
- The lock function can now be tested.

**6 HANDLE INSTALLATION**



- Install furniture according to H100 instructions.

**7 STRIKE INSTALLATION**



- Mark position of strike on door frame.
- Use strike and strike box as templates and then mortice door frame for strike.
- Install strike and strike box with mounting screws supplied.
  - Timber frames - drill 2.5mm pilot holes and use 30mm long screws
  - Metal frames - drill 4mm pilot holes and use 12mm long screws

CUT HERE

CUT HERE