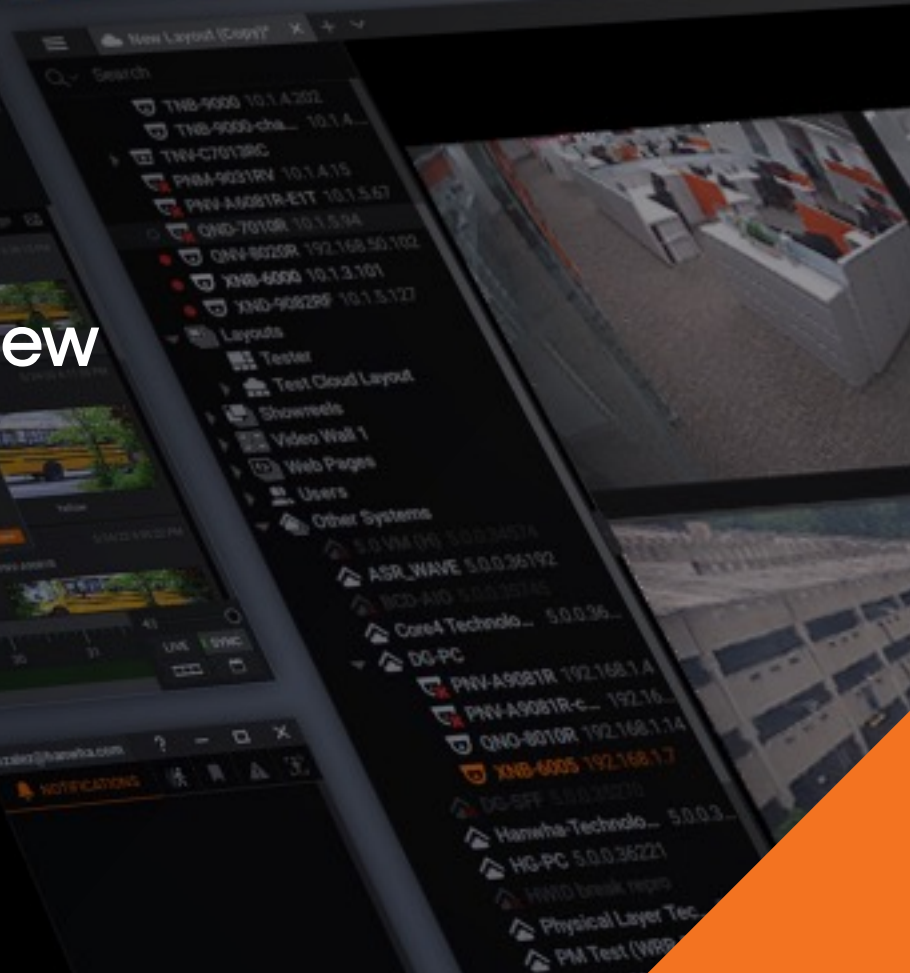


WISENET WAVE

v5.1 Feature Overview



The screenshot displays the Wisenet Wave v5.1 interface. On the left, a search bar is visible above a list of devices. The device list includes:

- TNB-9000 10.1.1.202
- TNB-9000-cha... 10.1.1...
- TNB-C76139C
- PNW-9021RV 10.1.1.15
- PNW-A9081R-EIT 10.1.1.57
- QNO-7010R 10.1.1.94
- QNB-8020R 192.168.50.102
- XNB-6000 10.1.1.101
- XNB-90829F 10.1.1.127

Below the device list, there are sections for 'Layouts', 'Tester', 'Test Cloud Layout', 'Showrooms', 'Video Wall 1', 'Web Pages', and 'Users'. An 'Other Systems' section lists various components:

- 5.0.0.36192
- ASR_WAVE 5.0.0.36192
- BCD-810 5.0.0.36192
- Core4 Technolo... 5.0.0.36...
- DG-PC
 - PNW-A9081R 192.168.1.4
 - PNW-A9081R-e... 192.16...
 - QNO-8010R 192.168.1.14
 - XNB-6005 192.168.1.7
- DG-SFP 5.0.0.36220
- Hanwha-Technolo... 5.0.0.3...
- HG-PC 5.0.0.36221
- HWID break repo
- Physical Layer Tec
- PM Test (WR...

On the right side of the screenshot, a 3D architectural rendering of an office or industrial space is visible, showing desks, chairs, and lighting fixtures.

- 01 **New Key Features**
- 02 Notable Improvements
- 03 New Device Support
- 04 New Dev Tools

New Key Features

- Cross-system Layouts
- Camera Replacement
- Remote Log Retrieval

01 New Key Features

02 **Notable Improvements**

03 New Device Support

04 New Dev Tools

Notable Improvements

- Min/Max Archive retention
- Motion DB is now archive storage
- Server connections now logged in Audit Trail
- Added power management
- Added support for MPEG4
- Enhanced Search
- Update to bookmarks

- 01 New Key Features
- 02 Notable Improvements
- 03 **New Device Support**
- 04 New Dev Tools

New Device Support

- New in-camera analytics support added for Milesight, Uniview
- In-camera LPR support added for Milesight, Vivotek, Axis
- Added Hanwha Intercom support

- 01 New Key Features
- 02 Notable Improvements
- 03 New Device Support
- 04 **New Dev Tools**

New Dev Tools

- New abilities added to Client Java Script API
 - Get cloud and user token
 - Set lock and unlock layout settings
 - Hide menu controls



-
-
-

New Key Features

WISENET WAVE v5.1 Feature Overview



Cross-system layouts

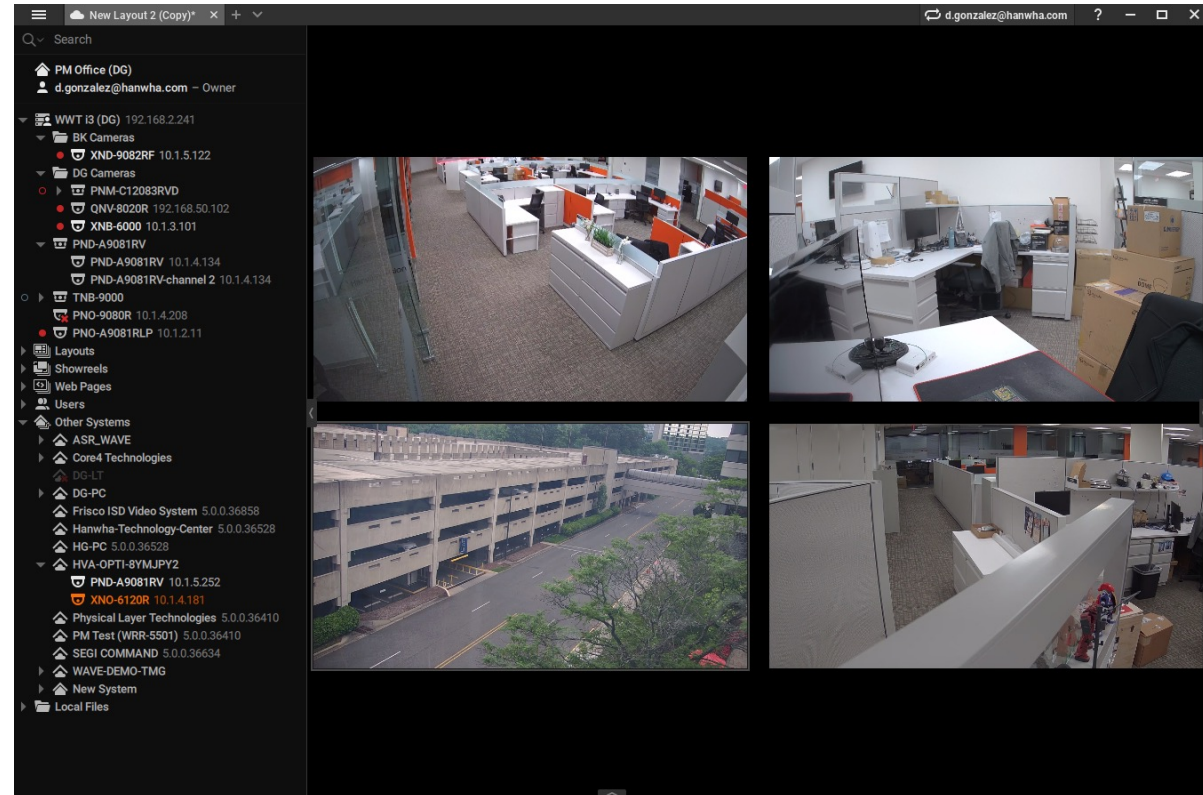
Operators with rights to multiple Systems can now combine cameras from Cloud-connected Systems into a single Layout.

Available Actions:

- Live Video
- Archived Video
- PTZ Controls
- Motion Search

Key Benefits:

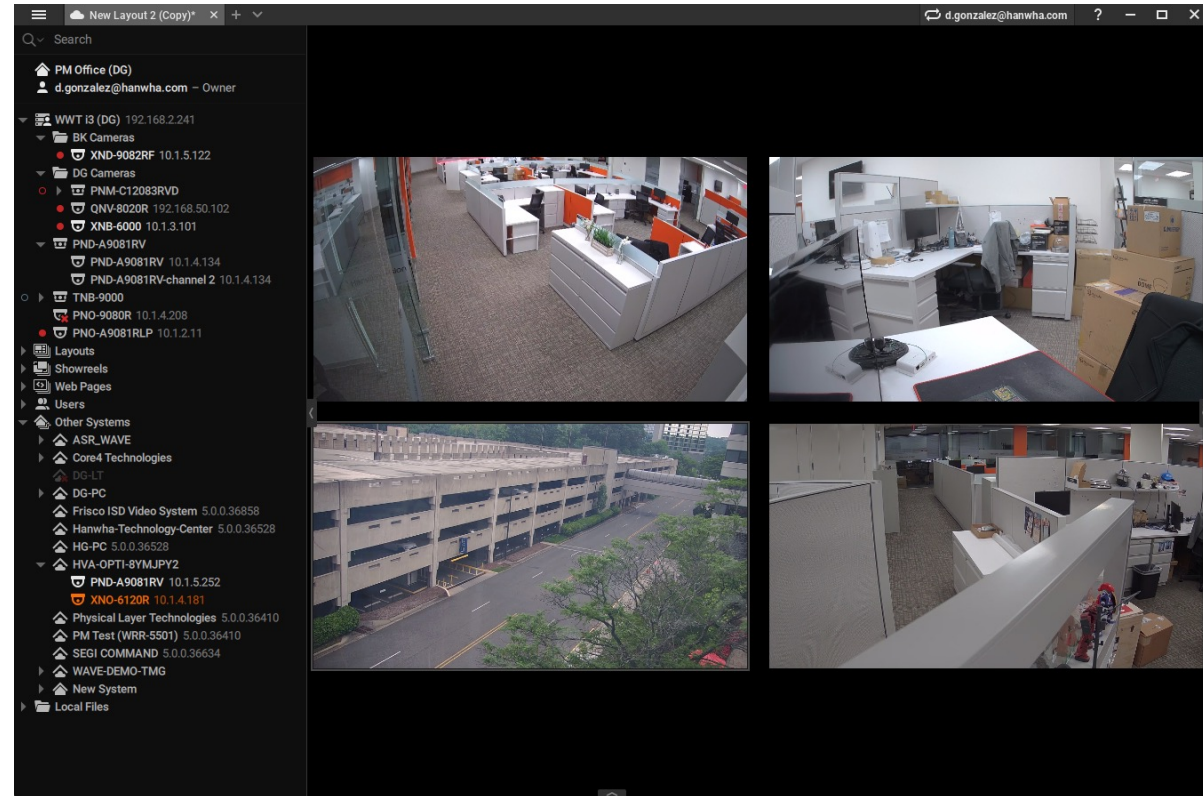
- Combine video from multiple Cloud-connected Systems into a single Layout



How cross-system layouts works

This is...simple

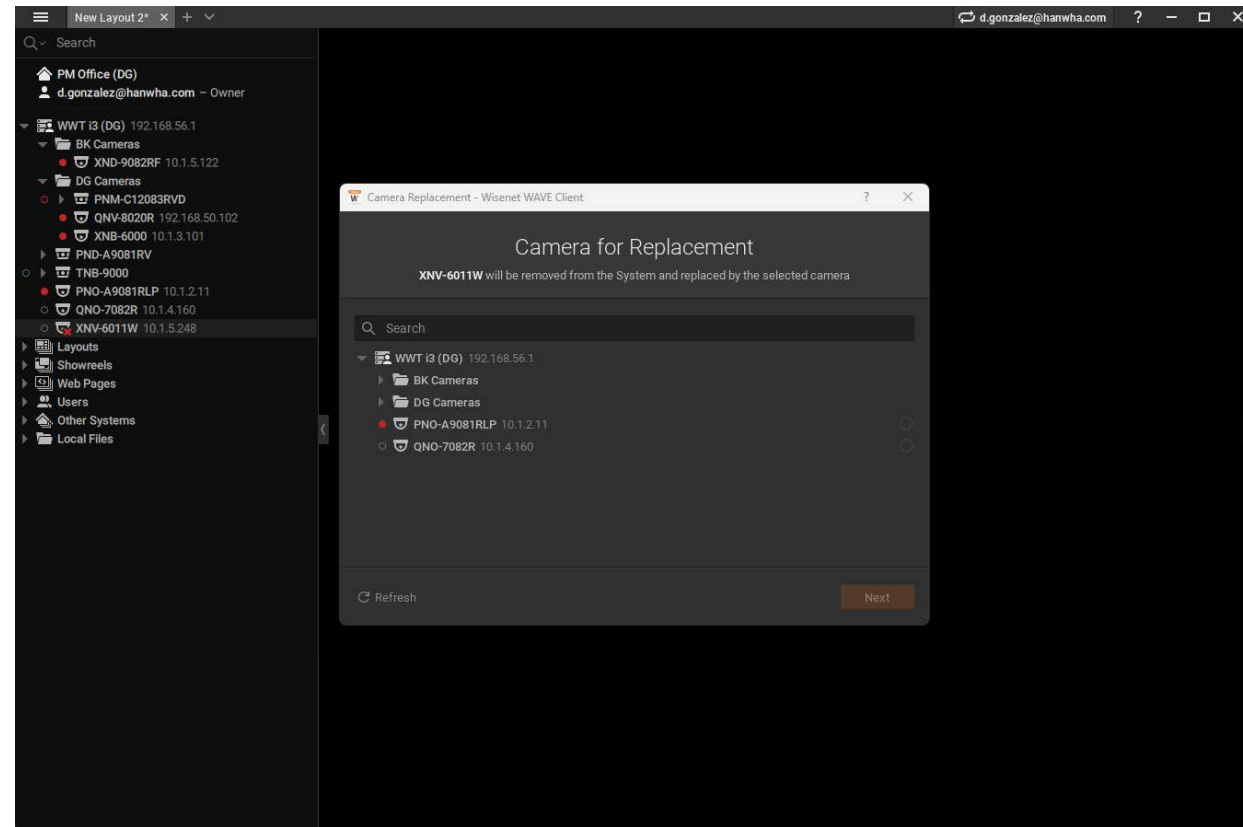
- **Create a Layout** by dragging cameras from your currently connected System onto the Viewing Grid.
- In the **Resource Panel**, scroll down to the **Other Systems**. Compatible Systems (v5.1 and higher) will have nested cameras.
- Drag a camera of your choice onto the Viewing Grid and Save.



Camera replacement

A simple, straightforward way System Owners or Administrators can replace an IP camera with just a few clicks of the mouse.

- Name, archive, general and advanced settings, recording settings, PTZ settings, event rules, analytics and camera access rights will be transferred to a new camera.
- Motion Detection settings, 2-way Audio will not be transferred
- The current archive from the old camera will still be accessible
- The camera must be on the same Server

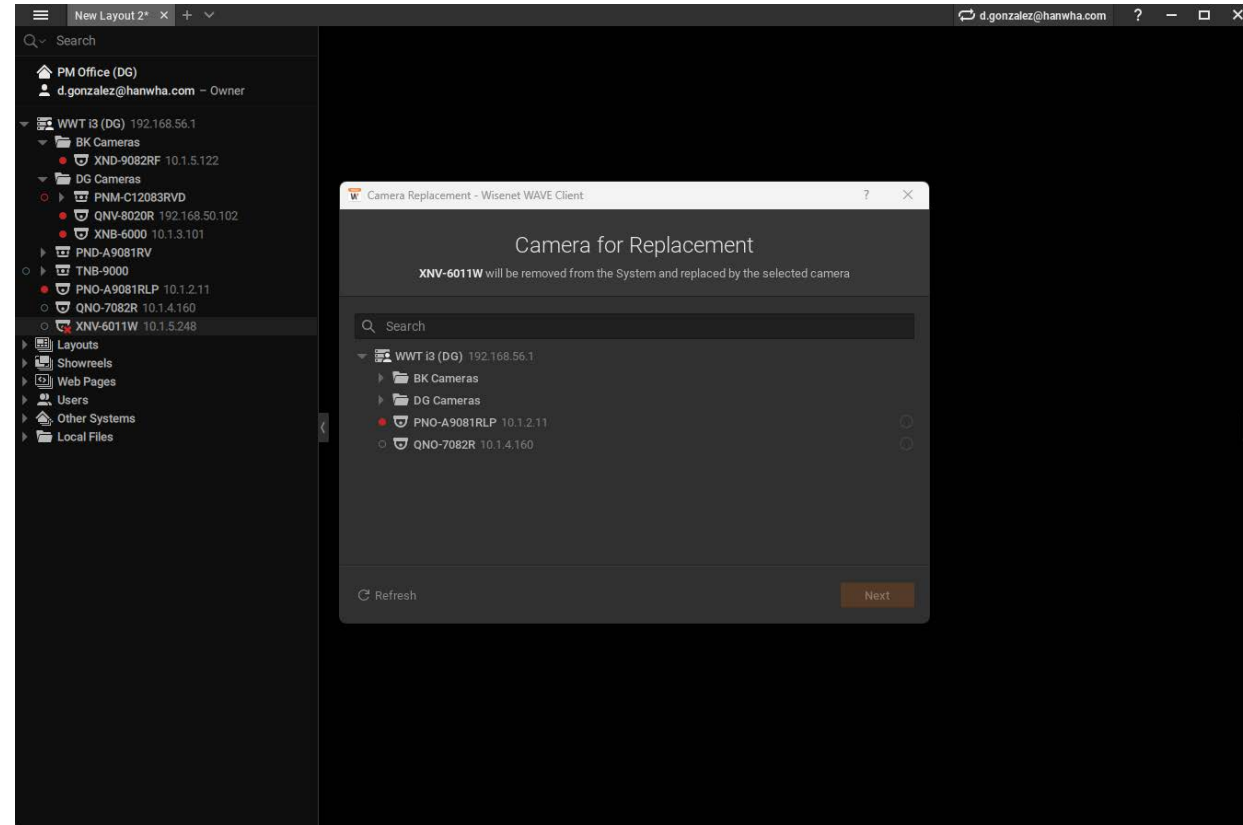


How replacement works

A fast, easy way to swap out a camera

- In the **Resource Panel**, right click on the camera you would like to replace and choose **Replace Camera**
- In the **Camera Replacement** dialog, review what data will be transferred and choose **Next**

Camera replacement is not supported for:
Virtual cameras, Speakers, NVRs, IO modules,
Multi-sensor cameras, Unauthorized cameras
or offline cameras that appear after reindexing
the archive.

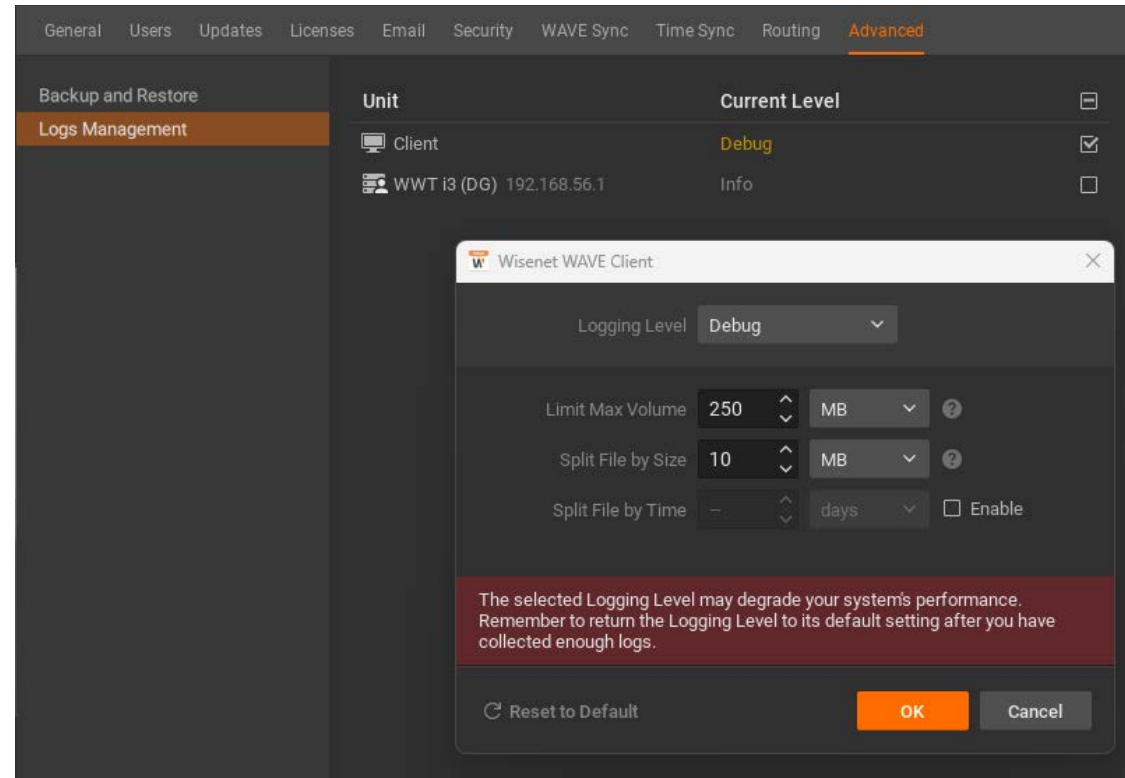


Remote Log Retrieval

Users can now download Desktop Client and Server logs remotely via the Desktop Client

How does it work?

- While in the Desktop Client, navigate to the **System Administration** dialog and then click on the **Advanced** tab
- In the left panel, choose **Logs Management** and use the checkboxes to select the log(s) you would like to download



-
-
-
-

Notable Improvements

WISENET WAVE v5.1 Feature Overview



Notable Improvements

- Min/Max archive retention period is in minutes, hours and days now
- Motion DB was moved from the system storage to the archive storage
- Server connections to/disconnections from the Cloud are now logged in the Audit Trail
- Added a power management setting that allows computers to sleep while the Desktop Client is still open
- Showreels no longer display a title bar on top with the camera name
- Added support for MPEG4 RTSP video streams
- Bookmarks and object attributes could be found only if a text matched the one from the beginning of the word
- Now search can be performed by a text in the middle of the string (3 symbols minimum)



-
-
-
-

New Device Support

WISENET WAVE v5.1 Feature Overview



New Device Support

- New in-camera analytics support added for Milesight, Uniview
- In-camera LPR support added for Milesight, Vivotek, Axis
- Hanwha intercom support added



New Dev Tools

WISENET WAVE v5.1 Feature Overview



New Dev Tools

The following abilities have been added to the Client Java Script API:

- Get cloud and user token
- Set Locked/Unlocked layout settings
- Hide top menu controls (back button, refresh button, Fullscreen, info)

